



Oxford Cambridge and RSA

**Tuesday 17 November 2020 – Morning**

**GCSE (9–1) Geography B  
(Geography for Enquiring Minds)**

**J384/02** People and Society

Resource Booklet

Time allowed: 1 hour 15 minutes



**INSTRUCTIONS**

- Do **not** send this Resource Booklet for marking. Keep it in the centre or recycle it.

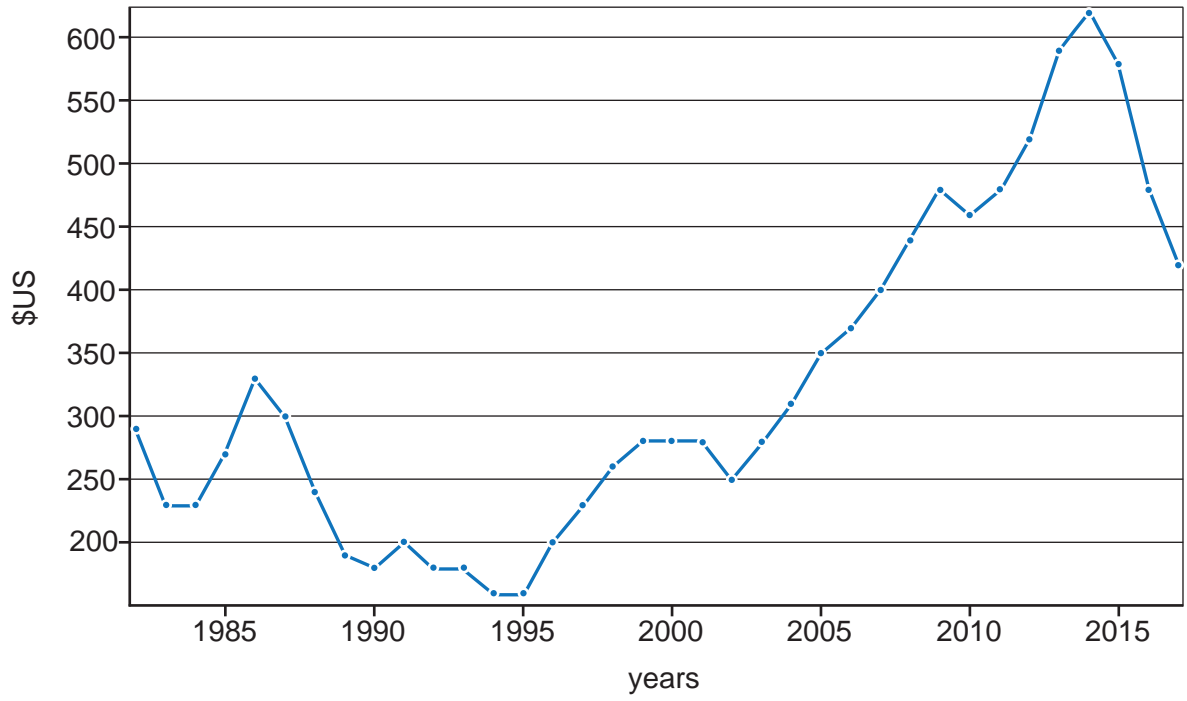
**INFORMATION**

- This document has **8** pages.

Fig. 1 A photograph showing a city in the United Kingdom



Fig. 2 A graph showing the GNI per capita in Mozambique



**Fig. 3 Population pyramids for the UK in 2005 and 2015**

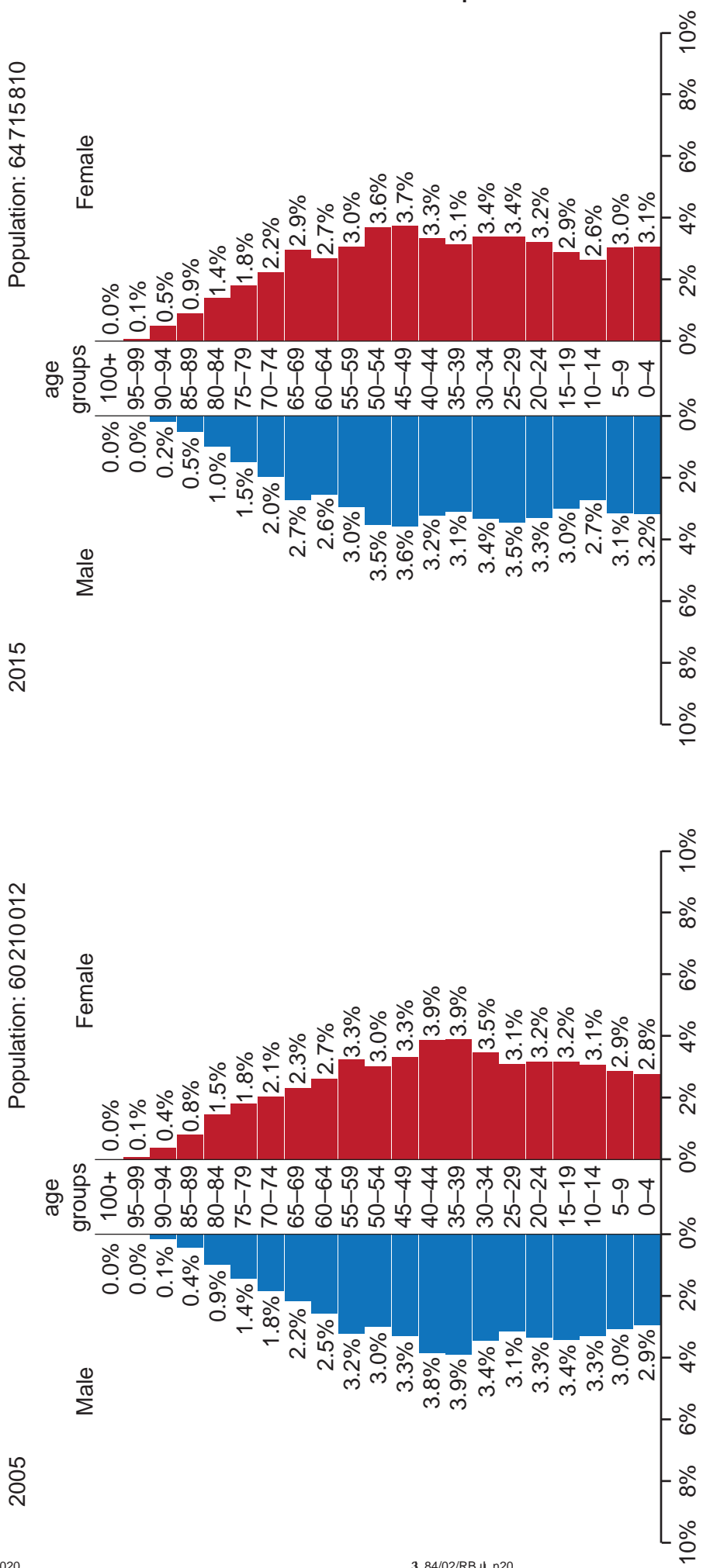
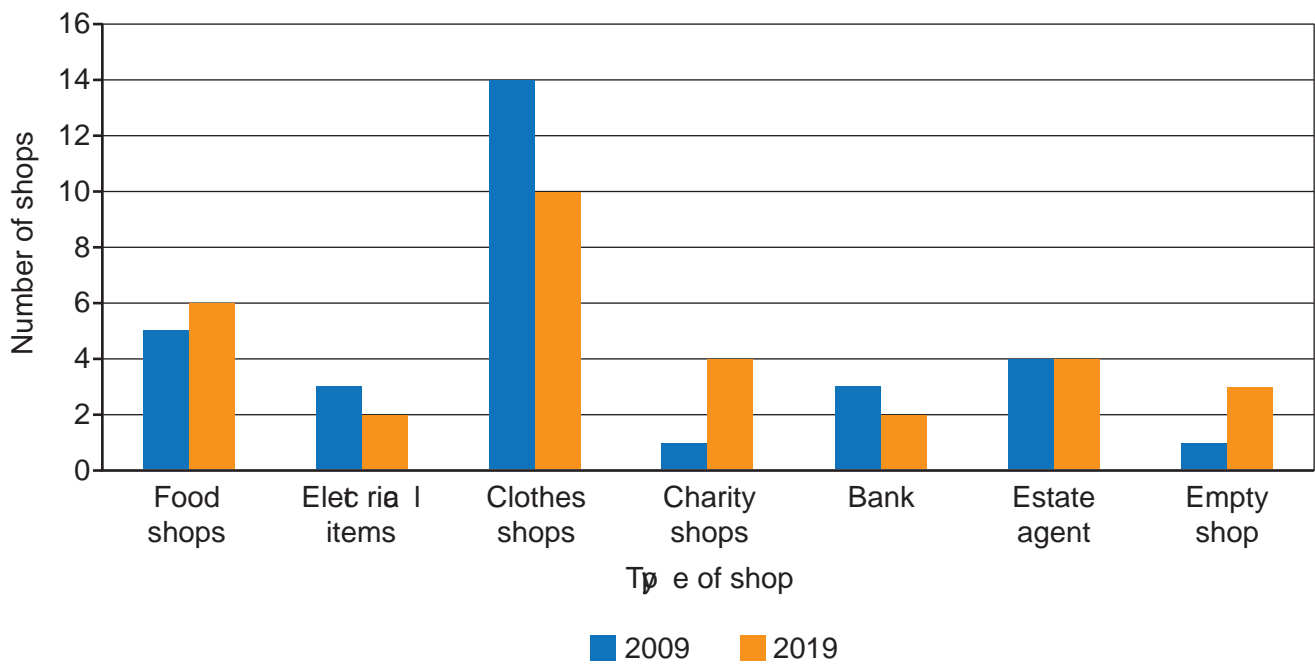


Fig. 4 Bar graph displaying results from a survey looking at how the number and type of shops in a city centre has changed



**BLANK PAGE**

**BLANK PAGE**

---

# OCR

Oxford Cambridge and RSA

## Copyright Information

OCR is committed to seeking permission to reproduce all third-party content that it uses in its assessment materials. OCR has attempted to identify and contact all copyright holders whose work is used in this paper. To avoid the issue of disclosure of answer-related information to candidates, all copyright acknowledgements are reproduced in the OCR Copyright Acknowledgements Booklet. This is produced for each series of examinations and is freely available to download from our public website ([www.ocr.org.uk](http://www.ocr.org.uk)) after the live examination series.

If OCR has unwittingly failed to correctly acknowledge or clear any third-party content in this assessment material, OCR will be happy to correct its mistake at the earliest possible opportunity.

For queries or further information please contact The OCR Copyright Team, The Triangle Building, Shaftesbury Road, Cambridge CB2 8EA.

OCR is part of the Cambridge Assessment Group; Cambridge Assessment is the brand name of University of Cambridge Local Examinations Syndicate (UCLES), which is itself a department of the University of Cambridge.